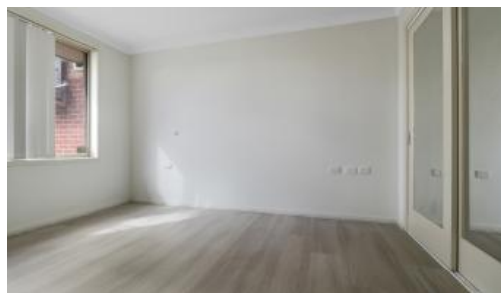


Leased



Unit 10, 359 Narellan Rd, Currans Hill



## Quiet Villa in a Great Location

This property is conveniently located and offers quick, easy access to the Hume Motorway. It is on the bus route for the local railway stations and Mount Annan, Narellan and Camden Town Centres.

Plus, you can enjoy the nearby wide-open spaces, walking and bike tracks of the Australian Botanic Garden, which is just across the road.

- \* Open plan living area opening onto a private courtyard.
- \* The main bedroom has private bathroom access and a built-in robe.
- \* Kitchen showcases stainless steel appliances, with ample bench and cupboard space.
- \* Ducted air conditioning.
- \* Low-maintenance courtyard
- \* Community garden in complex
- \* Ideal for over 55yo or anyone with a disability with easy access and accessibility aids throughout the home

The above information provided has been furnished to us by the vendor/s. We have not verified whether or not that information is accurate and do not have any belief in one way or the other in its accuracy. We do not accept any responsibility to any person for its accuracy and do no more than pass it on. All interested parties should make and rely upon their own inquiries in order to determine whether or not this information is in fact accurate.

3 1 1

Price	\$460pw
Property Type	Rental
Property ID	101

### Agent Details

Chris Crescini - 0489071547

### Office Details

CJ Crescini Real Estate  
(02) 8001 6362

